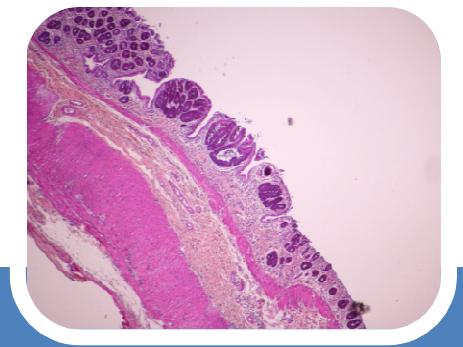
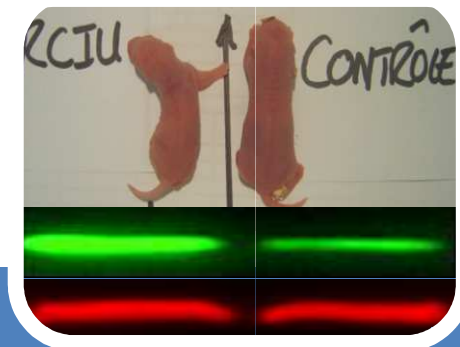
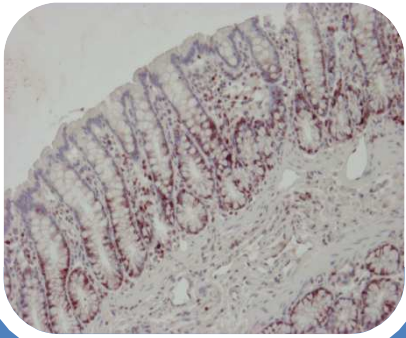


**Rencontre IMAD**  
**PHYSIOPATHOLOGIE DIGESTIVE**  
[www.imad-nantes.org](http://www.imad-nantes.org)

**« Impact du retard de croissance  
intrautérin sur la barrière intestinale »**

**Jean-Pierre Segain, UMR 1280-PhAN, Nantes**



**Mardi 27 janvier 2015 > 12h30**  
CHU Hôtel Dieu de Nantes, salle de réunion IMAD\*

Contact : [malvyne.derkinderen@univ-nantes.fr](mailto:malvyne.derkinderen@univ-nantes.fr)